

Noto Satoyama Satoumi Meister Program

Are you interested in learning about Satoyama Satoumi (production landscapes sustainably managed by human activities such as agriculture, forestry and fishery), culture, tradition, and nature of Noto? Noto has been designated as Globally Important Agricultural Heritage Systems (GIAHS). This course provides you the opportunity to learn about the region through on-line lectures and a study tour.

Price: FREE on-line lectures and 6,000 to 9,000 yen for study tour depending on the tour you choose.



Part 1

On-line Lectures: 'Living in Harmony with Nature: Satoyama and Satoumi in Japan and World'

In English



- Lecture 1: Satoyama and Satoumi: definition, present condition and problems
- Lecture 2: Human activities and biodiversity in Satoyama and Satoumi
- Lecture 3: Global partnership through Satoyama conservation and advancement
- Lecture 4: Living in harmony with nature in Satoyama and Satoumi

Length: 6 hours (1 hr 30 mins per lecture)

Report: Once you have completed watching the on-line lectures, please submit a report by the end of August 2016.



Part 2

Study Tours in Noto

With English/Japanese translator

You can join one of the study tours provided by Kanazawa University. You will visit various places in Noto and learn the culture, tradition, and biodiversity of the region. Further more, you will be able to experience local cuisine. These tours are a joint program with 'common education course' of Kanazawa University. Therefore, you will enjoy the tour with other Japanese students.

Date: **Tour 1** in June/July, **Tour 2** in July, & **Tour 3** in September.

*Another tour is planned for December.

Report: After the tour, you will be asked to submit a report.



Once you have completed this course, you will receive a proof of completion of Satoyama Satoumi Meister (on-line course). *It is not a credit based on the School Education Law.

Further information and application from: <http://www.crc.kanazawa-u.ac.jp/meister/online-course/>

Application deadline is 20th of May for Tour 1 & 2, 3rd of September for Tour 3.

Contact: Kanazawa University Noto Campus, 33-7 Kodomari Misaki-machi, Suzu, Ishikawa 927-1462 JAPAN
TEL 0768-88-2568 FAX 0768-88-2899 E-mail meister@adm.kanazawa-u.ac.jp



Tour 1

Satoumi Tour in June/July

Join us!

Date : June 30th(Sat.) – July 1st(Sun.) 2018

Fee : 6,000 yen (accommodation & meals included)

*Only a few more places left for this tour.



Let's find aquatic creatures!

Taste the local cuisine!



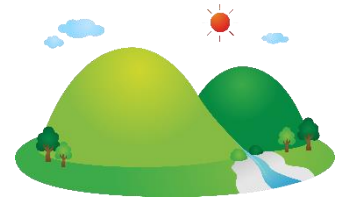
Tour 2

Satoyama Tour in July

Date : July 7th(Sat.) – 8th(Sun.) 2018

Fee : 6,000 yen (accommodation & meals included)

*Only a few more places left for this tour.



Visit rice paddies & forest!



Learn traditional culture!



Let's learn and experience Noto's Satoyama (landscape) and Satoumi (seascape), its nature & traditional culture. You can attend both Tour 1 & 2 if there are vacancies.

Application deadline is 20th of May for Tour 1 & 2.

Tour 3

Noto Tour in September



Date: September 13th(Thu.) – 15th(Sat.) 2018
Fee: 9,000 yen (accommodation & dinner included)

Visit Noto's
Power Spots!



Experience the
Kiriko Festival!

Enjoy the
scenery!



Do you know
NOTO?



Taste the local
cuisine!

Why don't you experience the culture & life in Noto which has been designated as a Globally Important Agricultural Heritage Systems (GIAHS) by the FAO of the United Nations in 2011.

Application deadline is 3rd of September for Tour 3.

Let's GO !

* Another tour is planned for December.

Further information and application from: <http://www.crc.kanazawa-u.ac.jp/meister/online-course/>